

FRAMEWORK

Project 2.2: Integrated Mine Transition Framework (IMTF) for Mine closure planning



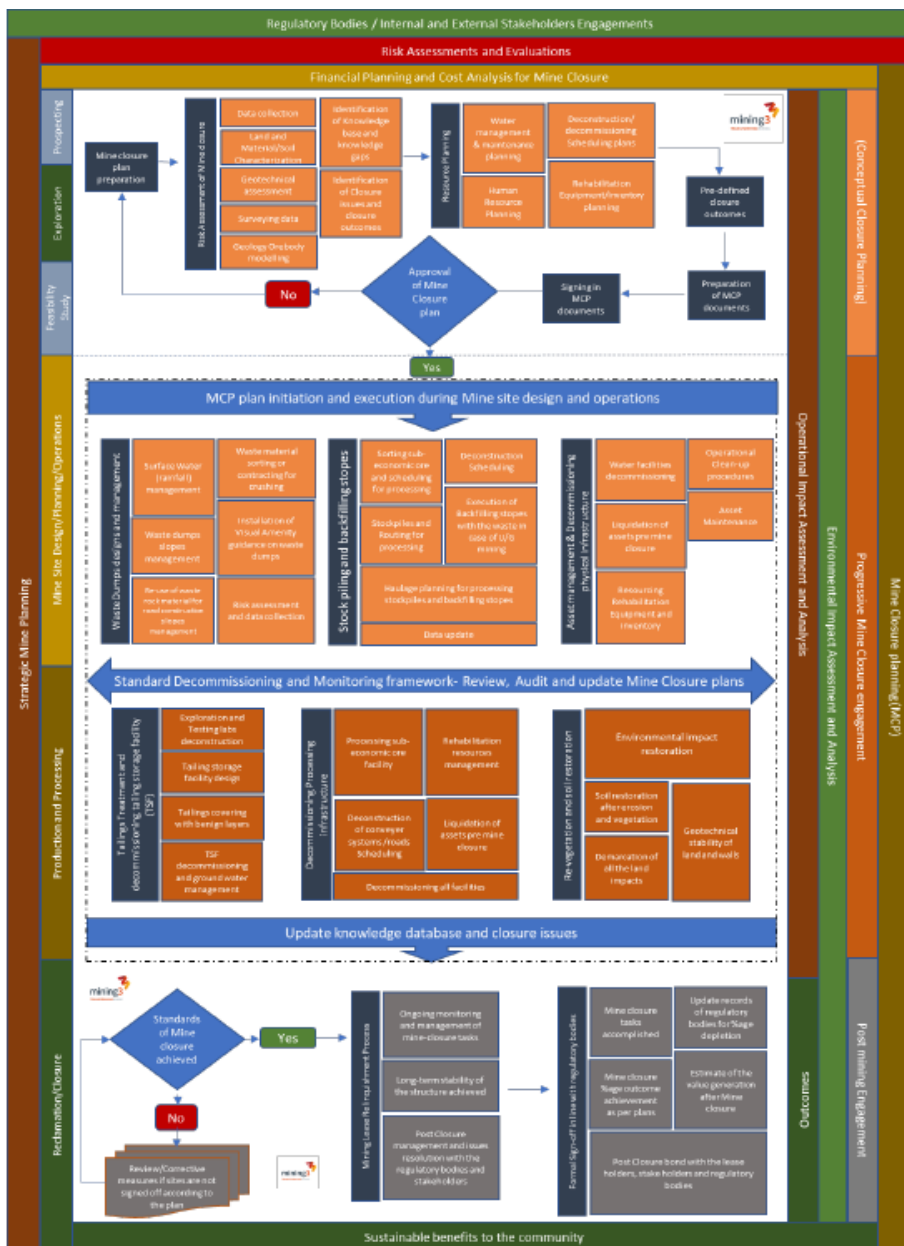
Extracted from: Dzakpata, I., Qureshi, M., Kizil, M. and Maybee, B. (2021). [Exploring the Issues in Mine Closure Planning](#). CRC TiME Limited, Perth, Australia.

These are extracts only. Each should be read in context of the full final report. Please refer to the full report for more information.

Summary

The main activities identified in progressive rehabilitation are acid and metalliferous drainage (AMD) management, waste dump/stockpiles management, water management, tailings treatment/TSF decommissioning, assets management, revegetation and soil erosion planning and management, and decommissioning of assets. These activities vary with the variations of the mining methods in place. The regulatory procedure needs to be followed for decommissioning of the mine and its assets. The audit, monitoring, and reporting on progressive rehabilitation processes continues during the mining operations, as shown in the above framework, "Integrated Mine Transition Framework (IMTF) for Mine closure planning".

Integrated Mine Transition Framework (IMTF) for Mine closure planning



REFERENCES

Dzakpata, I., Qureshi, M., Kizil, M. and Maybee, B. (2021). [Exploring the Issues in Mine Closure Planning](#). CRC TiME Limited, Perth, Australia.

ABOUT US

The Cooperative Research Centre for Transformations in Mining Economies is part of Australia's national innovation ecosystem. Our diverse partnership brings scale, collaboration and coordinated investment to tackle the most complex mine closure and post-mine transition challenges. Together we're rethinking what's possible to improve outcomes for people, communities, the environment and industry.

We acknowledge the traditional custodians across all the lands on which we live and work, and we pay our respects to Elders both past and present.

 crctime.com.au

 hello@crctime.com.au