

FRAMEWORK

Project 1.1: A foundational framework for RCIA (expanded)

CRC TiME
Transformations in Mining Economies

Australian Government
Department of Industry,
Science and Resources | AusIndustry
Cooperative Research
Centres Program

Extracted from: Sinclair, L., Pope, J., Holcombe, S., Hamblin, L., Pershke, D., Standish, R.J., Kragt, M.E., Haslam-McKenzie, F., Subroy, V. and Young, R.E. (2022). [Towards a framework for regional cumulative impact assessment](#). CRC TiME Limited, Perth, Australia.

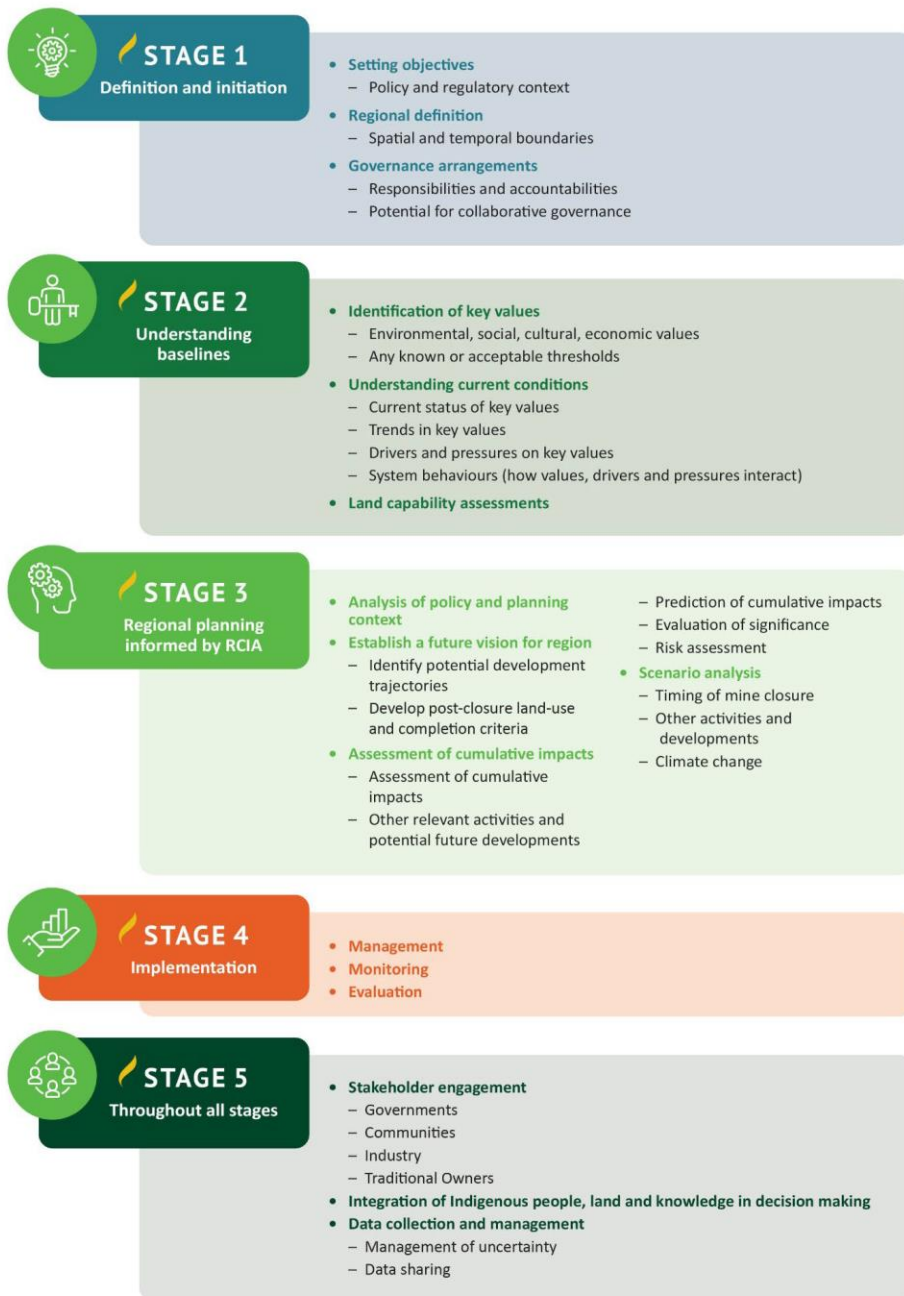
These are extracts only. Each should be read in context of the full final report. Please refer to the full report for more information.

Summary

An RCIA framework for mine closure can contribute to four distinct activities related to post-mining regional transitions:

1. Define and initiate the overall process.
2. Understand baseline conditions within a region and the cumulative pressures that have generated those conditions.
3. A predictive cumulative impact assessment of future development trajectories to inform the planning process.
4. Ongoing assessment and monitoring to support cumulative impact management.

The fifth stage, which includes Stakeholder Engagement, Integration of Indigenous people, land, and knowledge in decision making, and Data Collection and Management, should be undertaken throughout all stages.



REFERENCES

Sinclair, L., Pope, J., Holcombe, S., Hamblin, L., Pershke, D., Standish, R.J., Kragt, M.E., Haslam-McKenzie, F., Subroy, V. and Young, R.E. (2022). [Towards a framework for regional cumulative impact assessment](#). CRC TiME Limited, Perth, Australia.

ABOUT US

The Cooperative Research Centre for Transformations in Mining Economies is part of Australia's national innovation ecosystem. Our diverse partnership brings scale, collaboration and coordinated investment to tackle the most complex mine closure and post-mine transition challenges. Together we're rethinking what's possible to improve outcomes for people, communities, the environment and industry.

We acknowledge the traditional custodians across all the lands on which we live and work, and we pay our respects to Elders both past and present.